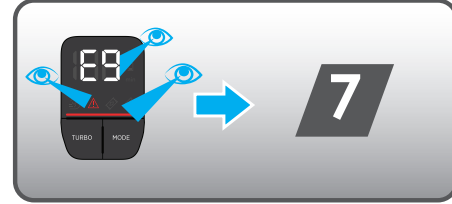
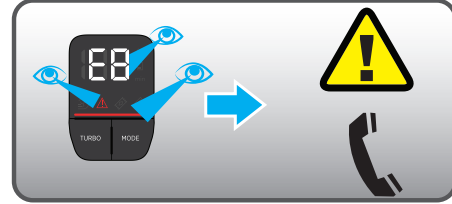
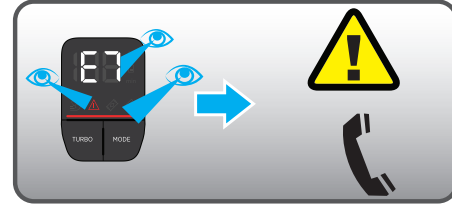
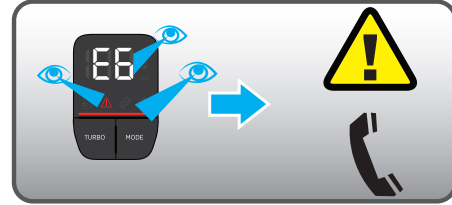
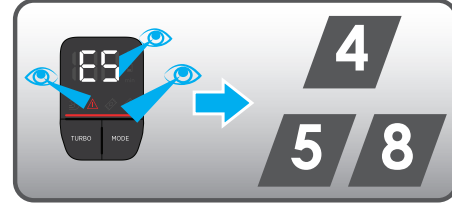
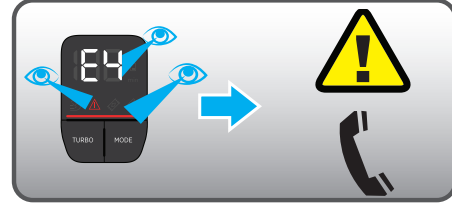
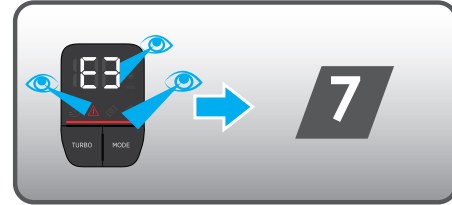
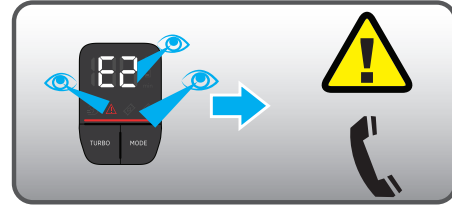
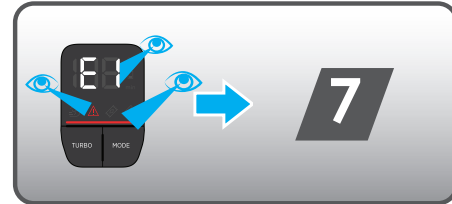
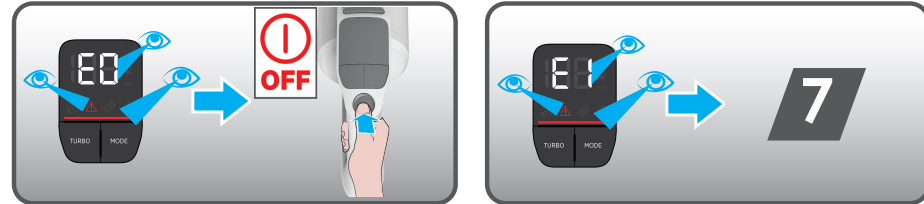
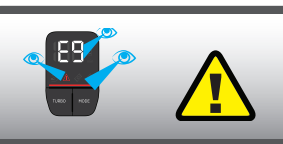
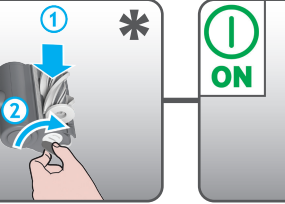
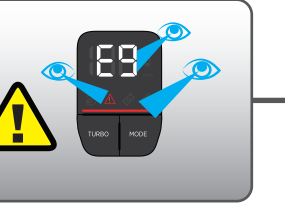
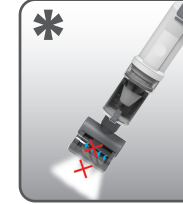
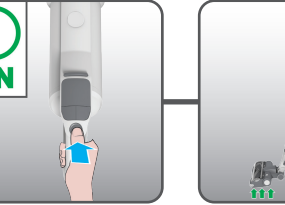
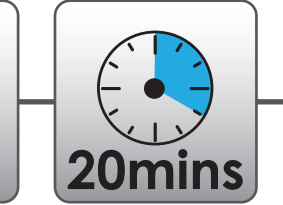
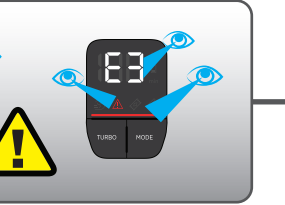
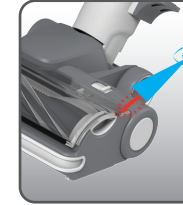
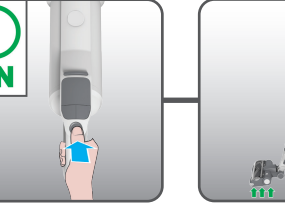
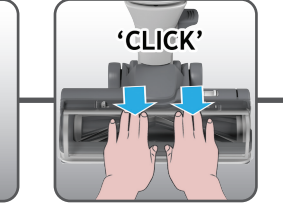
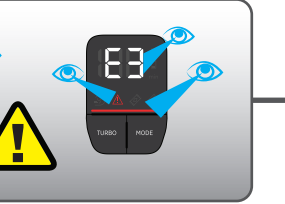
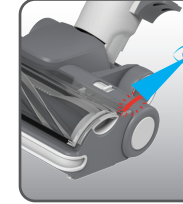
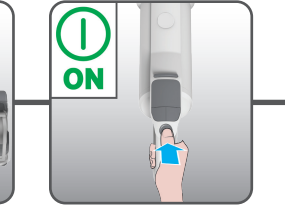
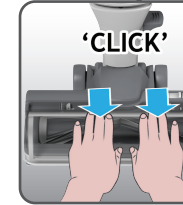
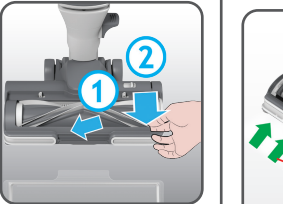
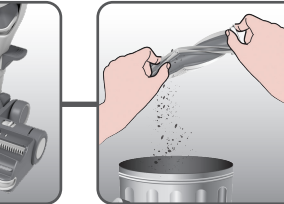
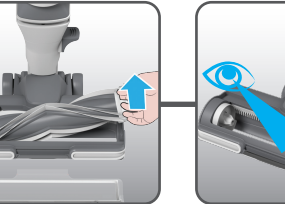
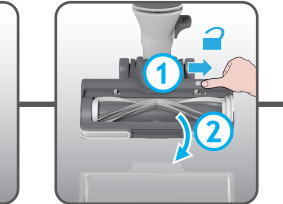
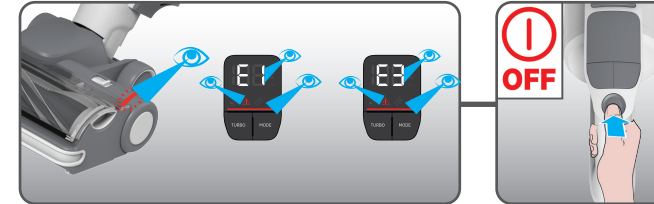
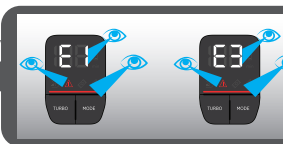


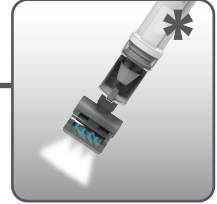
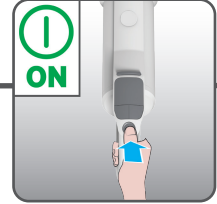
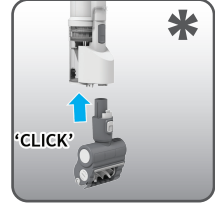
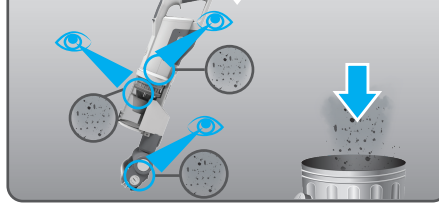
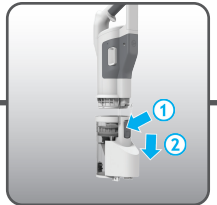
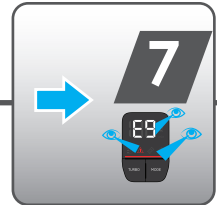
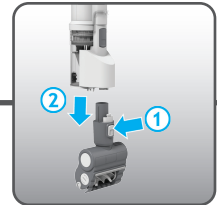
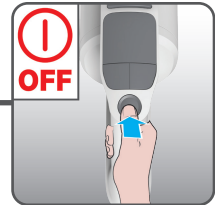
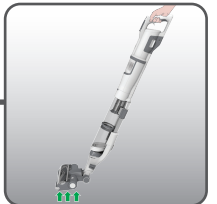
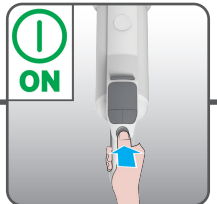
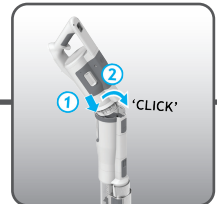
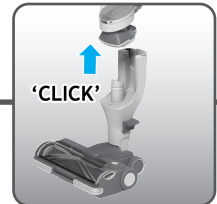
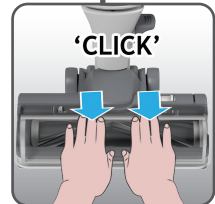
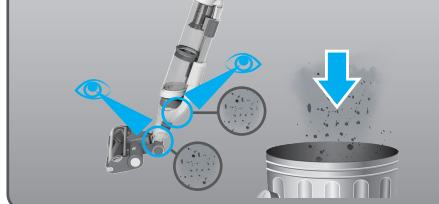
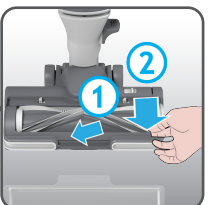
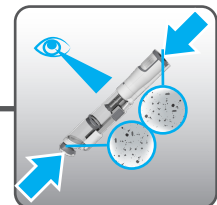
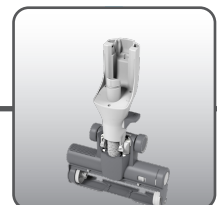
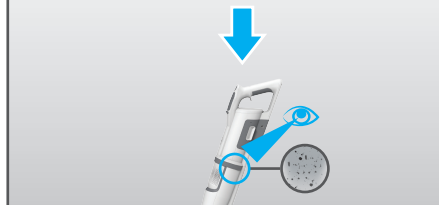
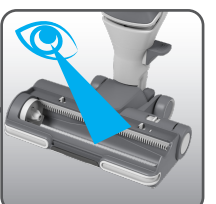
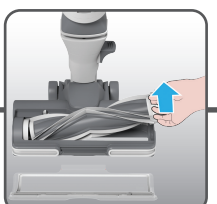
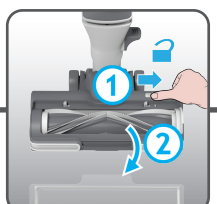
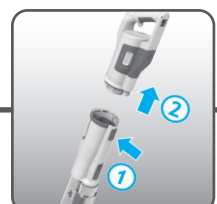
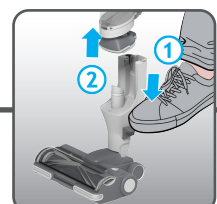
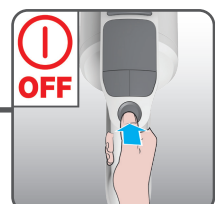
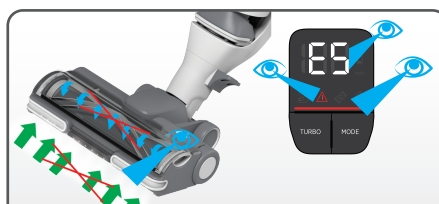
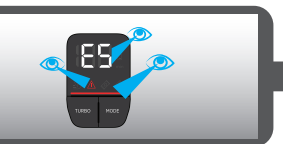
6



7



8



PRINTED IN P.R.C. Part No. : 48700623-1



- GB User Manual
- FR Guide de l'utilisateur
- DE Bedienungsanleitung
- IT Manuale d'uso
- NL Gebruikershandleiding
- PT Manual de Instruções
- ES Guía del usuario
- DK Brugervejledning
- NO Bruksanvisning
- SE Instruktionsmanual
- FI Käyttöohje
- GR Οδηγίες Χρήσεως
- RU Руководство пользователя

- PL Instrukcja Obsługi
- CZ Návod k obsluze
- SI Navodila Za Uporabo
- TR Kullanım Kılavuzu

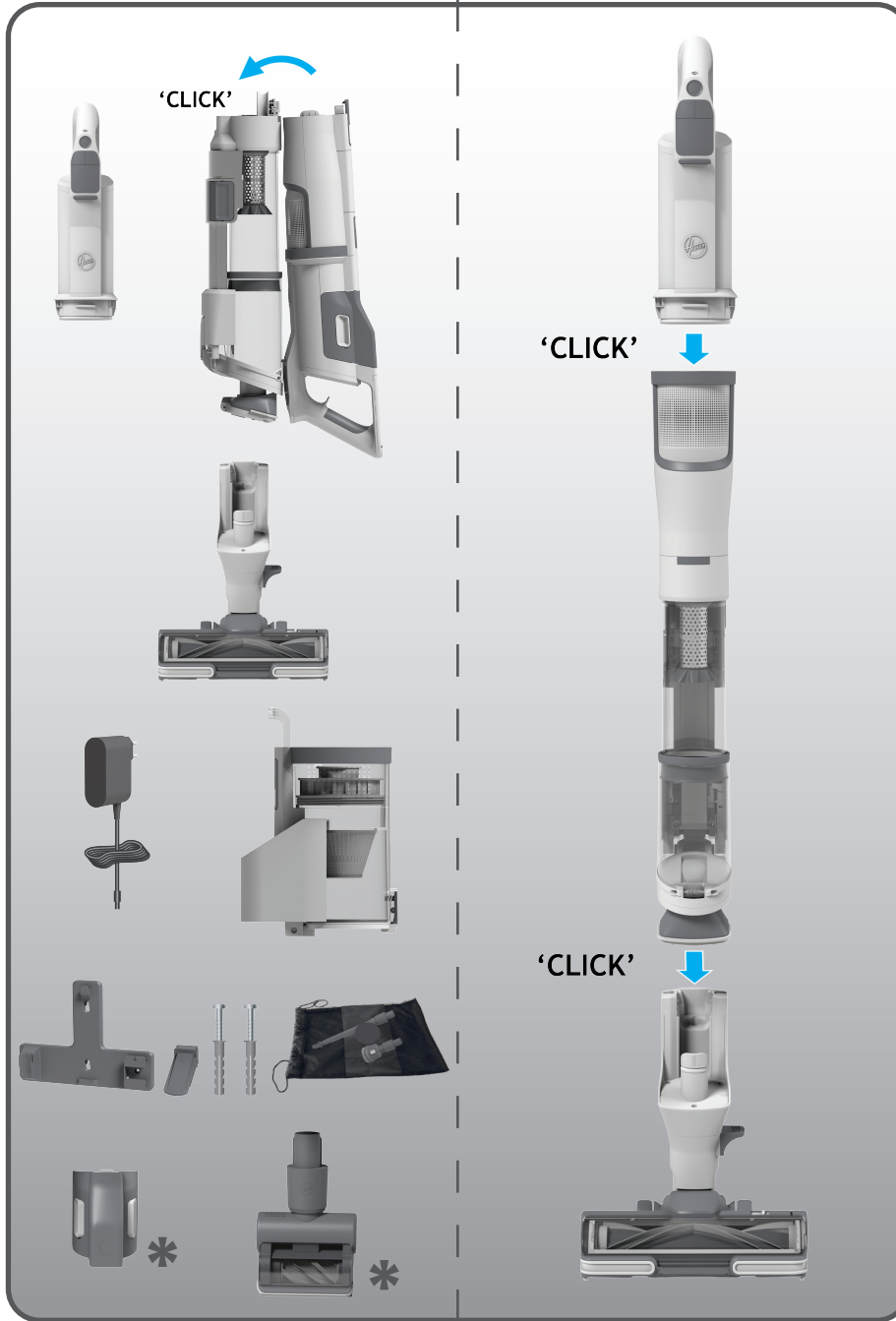
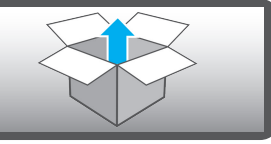


APPLY MANUAL LABEL HERE

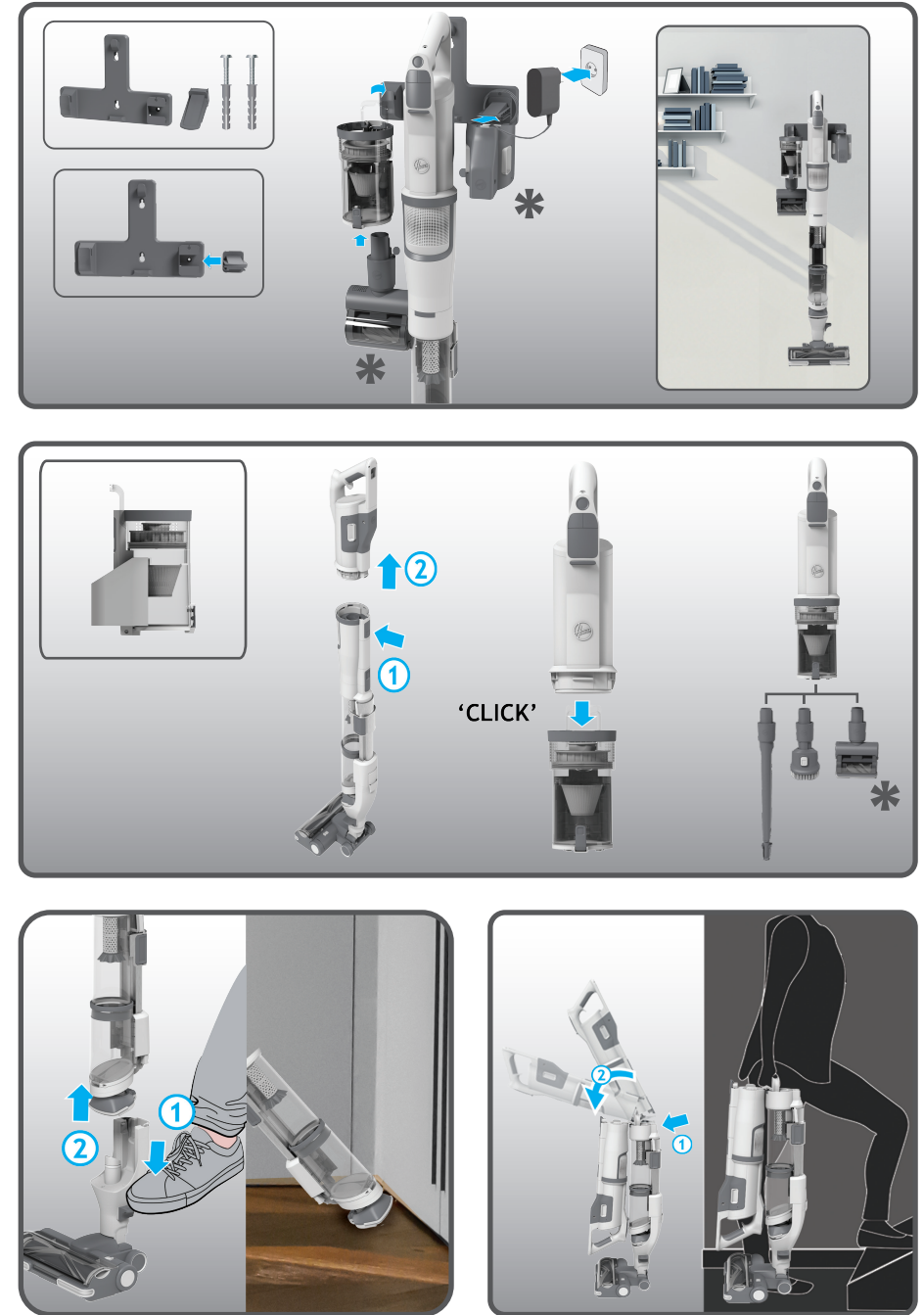
GB - Please read the 'Instructions for Safe Use and Fittings' booklet before using your product. FR - Veuillez lire le paragraphe « Instructions De Sécurité D'utilisation Et De Raccordement » avant d'utiliser votre produit. DE - Bitte lesen Sie vor dem Gebrauch des Geräts aufmerksam die „Bedienungsanleitung zur sicheren Benutzung“. IT - Leggere con attenzione il libretto "istruzioni Per Un Uso Sicuro E Per Il Montaggio Degli Accessori Opzionali" prima di utilizzare il prodotto. NL - Lees 'Instructies Voor Veilig Gebruik En Aansluitingen' voor u het produkt in gebruik neemt. PT - Por favor leia o manual "Instruções Para Utilização E Instalação Seguras" antes de começar a usar o produto. ES - Por favor lea las "Instrucciones Para Un Uso Seguro Y Para El Montaje" antes de utilizar el producto. DK - Læs venligst vejledningen "Instruktioner For Sikker Brug Og Samling", inden du tager produktet i brug. NO - Vennligst les veiledningen "Instruksjoner For Sikker Bruk Og Montering" før du bruker produktet. SE - Var vänlig läs "Instruktioner för säker användning" innan ni använder denna produkt. FI - Tutustu ennen tuotteen käyttöä "lisävarusteiden Turvallisen Käytön Ja Asennuksen Ohjeet" ohjeeseen. GR - Παρακαλώ διαβάστε την ενότητα "Οδηγίες Ασφαλούς Χρήσεως Και Εξαρτημάτων" στο βιβλίο οδηγιών, πριν χρησιμοποιήσετε το προϊόν. RU - Перед использованием прибора необходимо ознакомиться с «Инструкция По Безопасному Использованию И Применению». PL - Przed użyciem produktu, proszę zapoznać się z Instrukcją Bezpiecznego Użytkowania I Akcesoriów. CZ - Před použitím výrobku si důkladně přečtěte a dodržujte pokyny v brožurce "návod K Bezpečnému Použití A Upevnění". SI - Prosim Preberite Navodila Za Varno Uporabo In Sestavo Dodatnih Pripomočkov. TR - Lütfen ürünü kullanmadan önce kullanma kılavuzundaki 'güvenli Kullanım Ve Donanım' bölümünü okuyunuz.

- www.hoover.al
- www.hoover.be
- www.hoover.bg
- www.hoover.hr
- www.hoover.cz
- www.hoover.dk
- www.hoover.fi
- www.hoover.gr
- www.hoover.hu
- www.hoover-battics.com
- www.hoover.ma
- www.hoover.nl
- www.hoover-norge.no
- www.hoover.pl
- www.hoover.pt
- www.hoover.ro
- www.hoover.ru
- www.hoover.rs
- www.hoover.sk
- www.hoover.si
- www.hoover.se
- www.hoover.ch
- www.hoover.com.tr
- www.hoover.ua
- www.hoover-overseas.com

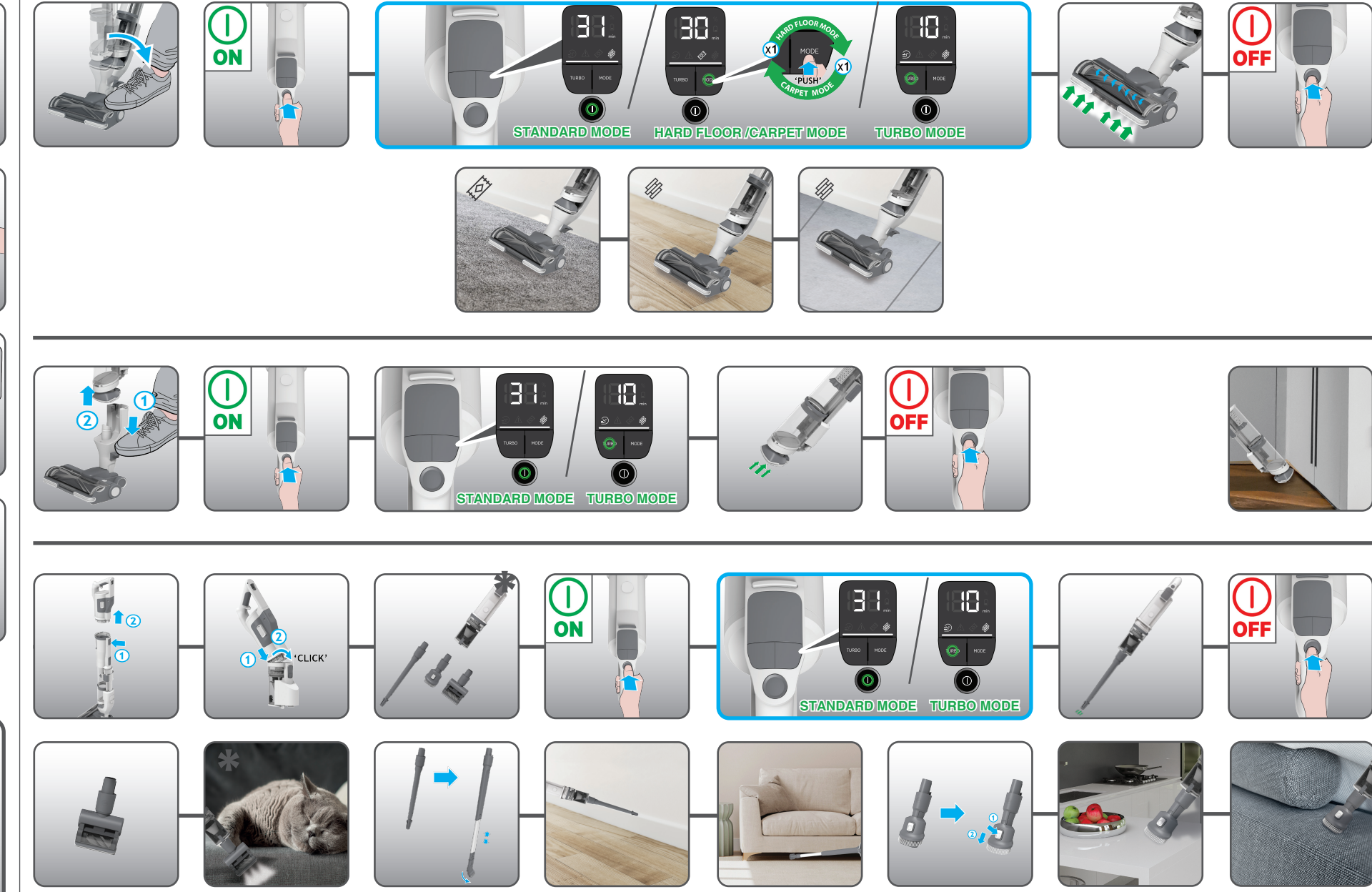
1



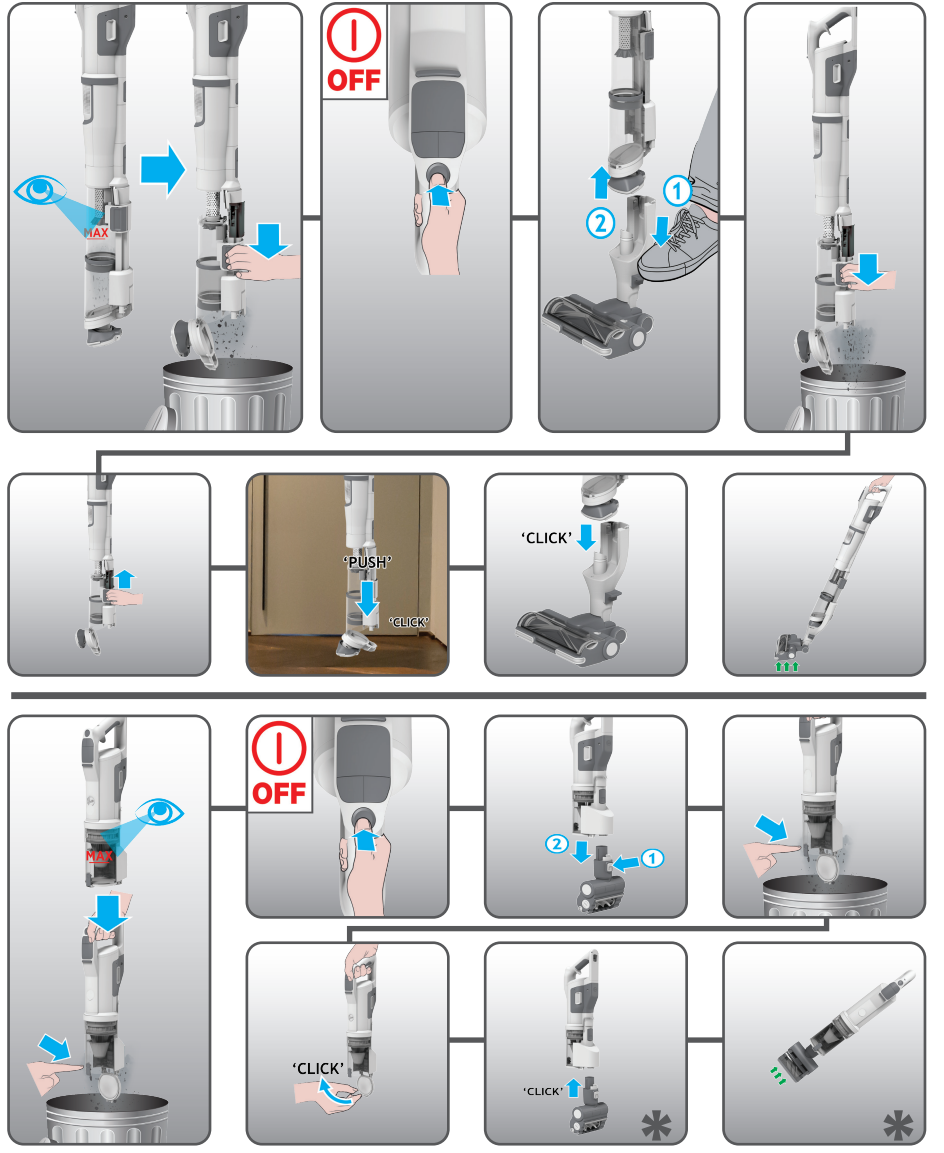
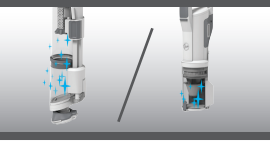
2



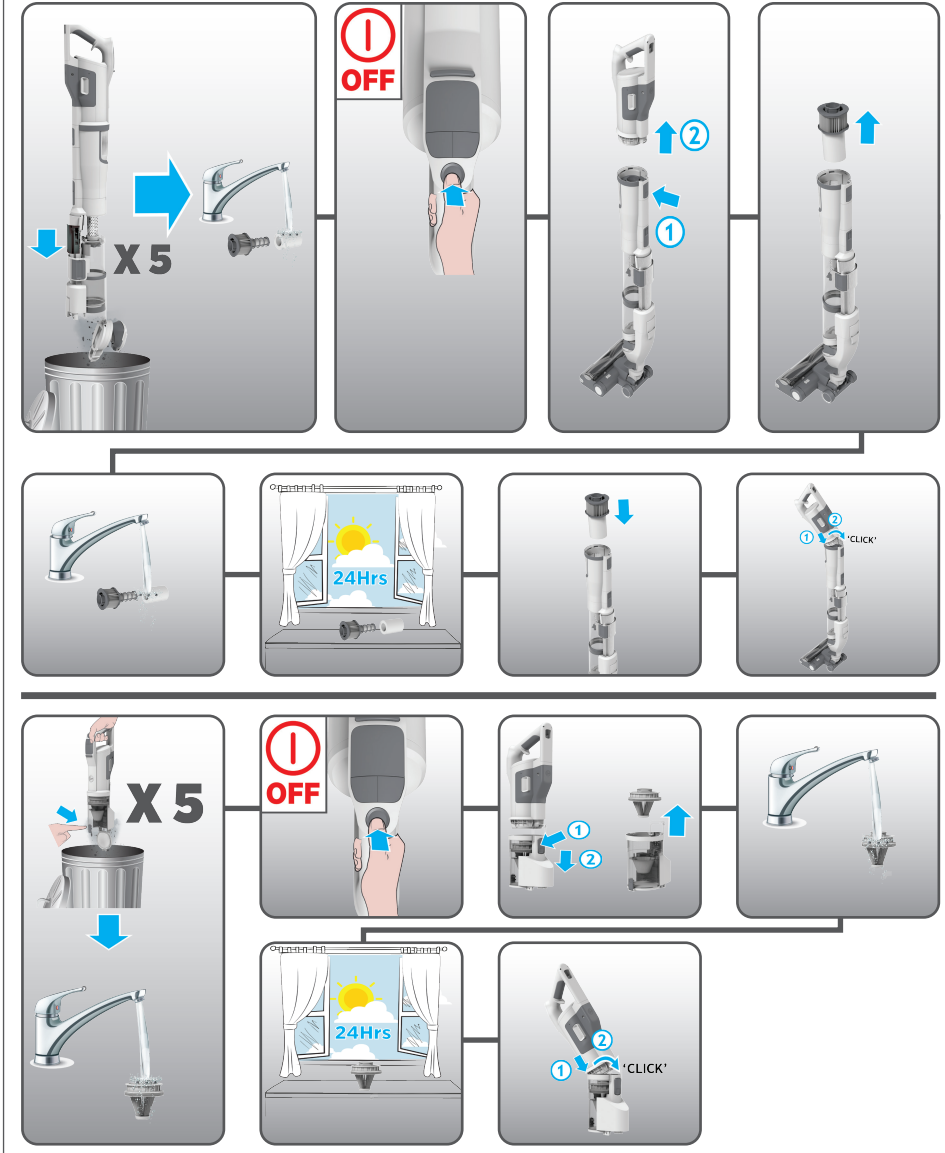
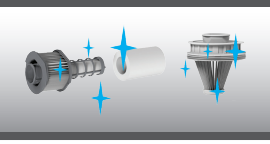
3



4



5



* GB - Content may vary according to your model. FR - Le contenu peut varier en fonction de votre modèle. DE - der inhalt kann je nach modell variieren. IT - I contenuti possono variare secondo il modello. NL - inhoud kan variëren volgens uw model. PT - o conteúdo pode variar de acordo com o modelo. ES - el contenido puede variar en base a su modelo. DK - indholdet kan variere i henhold til modellen. NO - innholdet kan variere avhengig av modellen. SE - innehåll kan variera beroende på modell. FI - sisältö saattaa vaihdella mallista riippuen. GR - περιεχομενο ενδεχεται να διαφερε αναλογα με το μοντελο. RU - содержимое может меняться в зависимости от модели. PL - zawartość może być inna w zależności od modelu. CZ - obsah semůže lišit v závislosti na vašem modelu. SI - obsah sa može lišit v závislosti od modelu. TR - içerik modelinize göre farklılık gösterebilir.

* GB - Content may vary according to your model. FR - Le contenu peut varier en fonction de votre modèle. DE - der inhalt kann je nach modell variieren. IT - I contenuti possono variare secondo il modello. NL - inhoud kan variëren volgens uw model. PT - o conteúdo pode variar de acordo com o modelo. ES - el contenido puede variar en base a su modelo. DK - indholdet kan variere i henhold til modellen. NO - innholdet kan variere avhengig av modellen. SE - innehåll kan variera beroende på modell. FI - sisältö saattaa vaihdella mallista riippuen. GR - περιεχομενο ενδεχεται να διαφερε αναλογα με το μοντελο. RU - содержимое может меняться в зависимости от модели. PL - zawartość może być inna w zależności od modelu. CZ - obsah semůže lišit v závislosti na vašem modelu. SI - obsah sa može lišit v závislosti od modelu. TR - içerik modelinize göre farklılık gösterebilir.